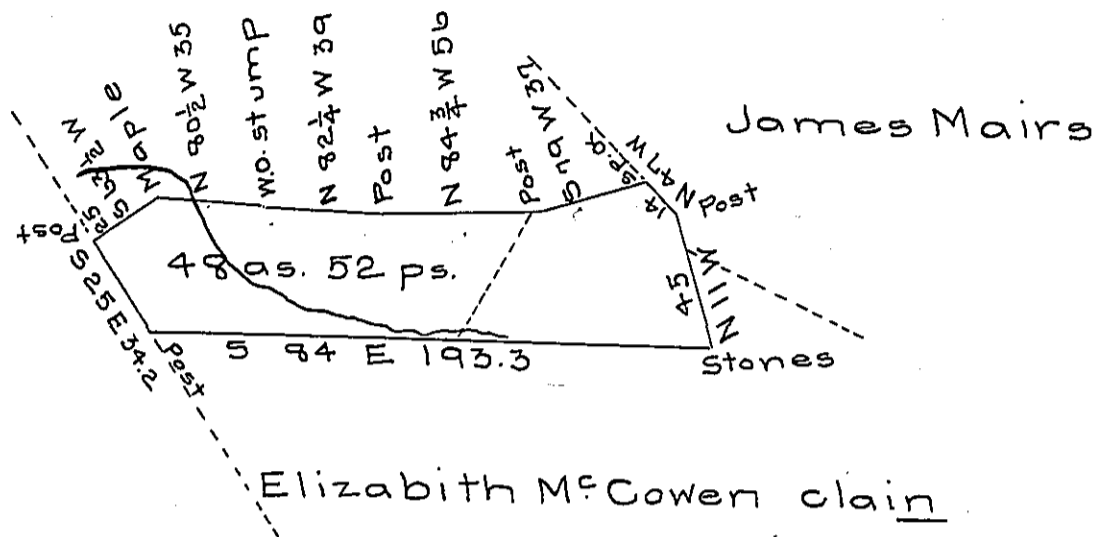


2000
342
54.2

George Rice

Thomas & Paul
Laughlen



Draught of forty eight acres and fifty two perches of land with six per cent for roads &c. situate in Tusarora township Juniata County surveyed August the 19th 1853 in pursuance of a warrant granted to Jesse McClure dated May the 25th 1853.

Conrad Markle C.S.

To J. Porter Brawley Esqr }
Surveyor General of Penn }

On the above land there is an actual settlement now long unknown east of the dated line is included in the Mountain survey

C.M.

IN TESTIMONY that the above is a copy of the original remaining on file in the Department of Internal Affairs of Pennsylvania, made conformably to an Act of Assembly approved the 16th day of February, 1833, I have hereunto set my Hand and caused the Seal of said Department to be affixed at Harrisburg, this second day of May 1906.

James P. Brown
Secretary of Internal Affairs.